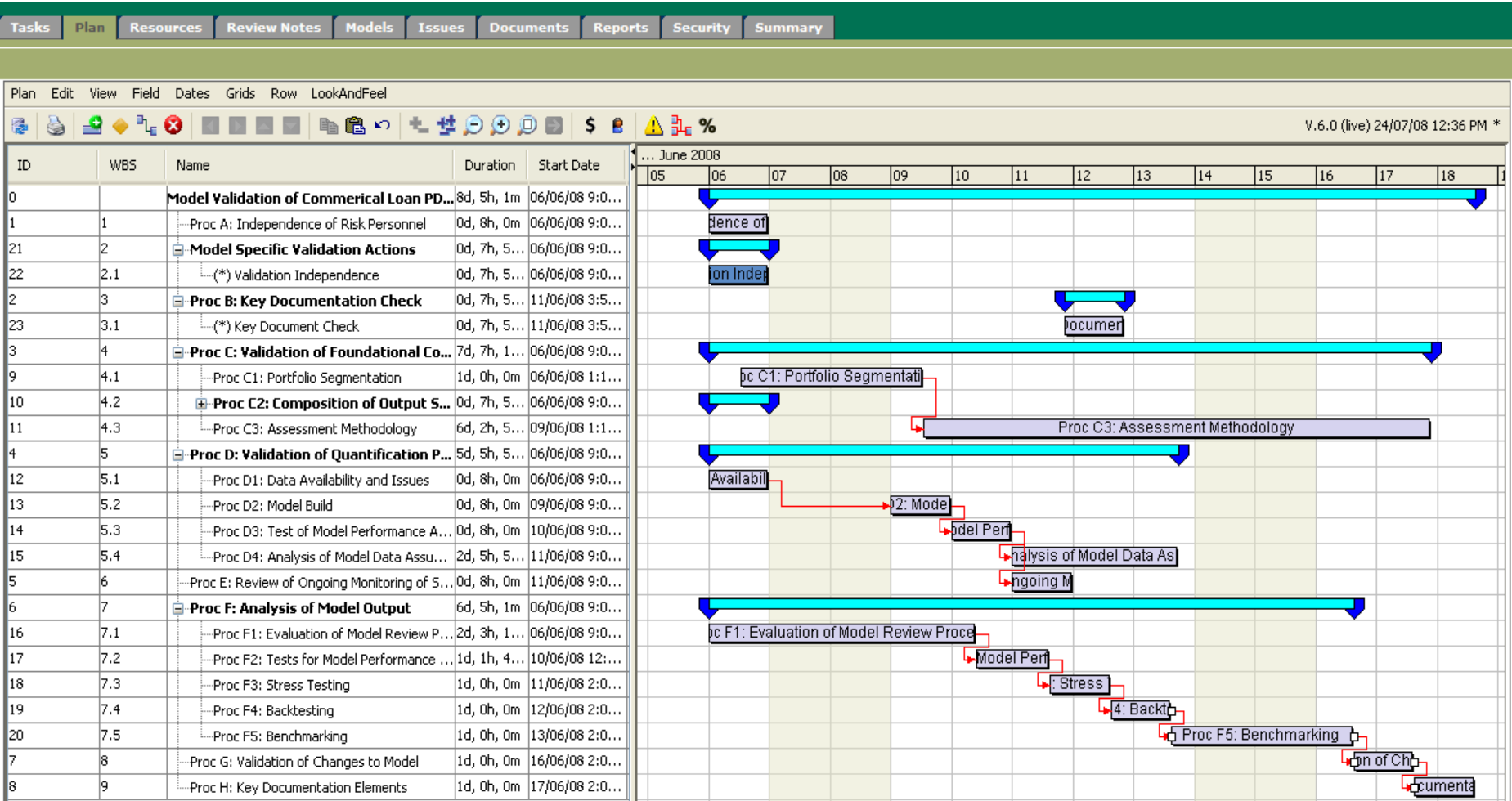


# Model Validation Project Planning

BPS streamlines the process of model validation planning, execution and reporting. Project management workflow, workpapers management and reporting can all be tracked in Gantt charts.



# Model Validation Catalog

Models can be organized in a hierarchical folder structure, a key element of the BPS Model Validation Platform.

The screenshot displays the Model Validation Platform interface. At the top, there is a navigation bar with tabs for Home, Search, Reports, Issues, Risk Management Library, and Administration. Below this, a secondary navigation bar includes Library, Templates, and Assessable Units. The main content area is titled 'Models' and features a 'Filter by:' dropdown set to 'All Statuses'. On the left, a 'Hierarchy Navigation' pane shows a tree view under 'OrgHierarchy' with sub-items: Corporate Planning, ALM, Retail, RCAG, CapStone Reality, CPM, and CCA. The main table, titled 'OrgHierarchy', displays 12 models. Each row includes a checkbox, an ID, a name, a description, creation date, profile, status, frequency, owner, and estimated effort.

<input type="checkbox"/>	ID	Name	Description	Created	Profile	Status	Frequency	Owner	Estimated Effort
<input type="checkbox"/>	49	Risk Calc	Assignments of Ratings/PDs for credit risk economic capital	06/06/08	Blueprint	Active		Jack Auditor	1 Hour
<input type="checkbox"/>	50	Acquistion Model	Acquistion Model	06/06/08	Blueprint	Active		Mark Opausky	1 Hour
<input type="checkbox"/>	51	Asset/Liability Model	Asset/Liability Model	06/06/08	Blueprint	Active		Mark Opausky	1 Hour
<input type="checkbox"/>	52	Automated Valuation Model	Automated Valuation Model	06/06/08	Blueprint	Active		Mark Opausky	1 Hour
<input type="checkbox"/>	53	Banking Balance Sheet VaR	Banking Balance Sheet VaR	06/06/08	Blueprint	Active		Mark Opausky	1 Hour
<input type="checkbox"/>	54	Capstone MSR	Capstone MSR	06/06/08	Blueprint	Active		Mark Opausky	1 Hour
<input type="checkbox"/>	55	Commercial LGD modeling	Commercial LGD modeling	06/06/08	Blueprint	Active		Mark Opausky	1 Hour
<input type="checkbox"/>	56	Commercial Loan PD by Rating System	Commercial Loan PD by Rating System	06/06/08	Blueprint	Active		Mark Opausky	1 Hour
<input type="checkbox"/>	57	Commercial Real Estate PD Model	Commercial Real Estate PD Model	06/06/08	Blueprint	Active		Mark Opausky	1 Hour
<input type="checkbox"/>	58	Credit Card Loss Model	Credit Card Loss Model	06/06/08	Blueprint	Active		Mark Opausky	1 Hour
<input type="checkbox"/>	59	Credit Card Securitization	Credit Card Securitization	06/06/08	Blueprint	Active		Mark Opausky	1 Hour
<input type="checkbox"/>	60	MV Survey	Survey	06/06/08	Blueprint	Active		Alice Assessor	1 Hour

# Model Scoring and Reporting

Rules to quantify qualitative assessments can be entered into the system through an Excel interface. These rules can be used in reporting.

Summary reports provide ERM managers with organized, prioritized reports, and help pinpoint areas of highest risk.

Excel interface showing a 'Models' report. The top part is a grid with columns for model groups (ALM, CapStone Reality, CCA, Corporate Planning, CPM, RCAQ, Retail) and rows for various models. The bottom part is a detailed table with columns: Model ID, Name, Group, Platform, Suitability of Design, Reporting & Governance, Tooling & Performance, Overall, Last Validation, and Year Added.

Model ID	Name	Group	Platform	Suitability of Design	Reporting & Governance	Tooling & Performance	Overall	Last Validation	Year Added
49	Risk Calc	CPM	Server Based Software	New	Semi-Formal	Watch	6.00		2008
50	Acquisition Model	Corporate Planning	Excel	Dated	Semi-Formal	Pass	5.00		2008
51	Asset/Liability Model	ALM	Server Based Software	Dated	Semi-Formal	Substandard	8.00		2008
52	Automated Valuation Model	Retail	TBD	New	Semi-Formal	Pass	5.00		2008
53	Banking Balance Sheet VaR	RCAQ	Server Based Software	Seasoned	Formal	Pass	3.00		2008
54	Capstone MSR	Capstone Reality	Excel	Dated	Semi-Formal	Pass	5.00		2008
55	Commercial LGO modeling	CPM	TBD	New	Semi-Formal	Watch	8.00		2008
56	Commercial Loan PD by Rating System	CPM	TBD	New	Formal	Pass	4.00	09/18/2008	2008

# Model Validation Protocol

Multi-step validation protocols can easily be entered in the form of a project. Projects can be assigned resources and tracked through completion. Reports can be generated to update management on an ongoing basis.

Tasks   Plan   Resources   Review Notes   Models   Issues   Documents   Reports   Security   Summary						
Displaying 1 - 24 of 24 tasks						
Name -	Status	ID	Resources	Last Modified By	Last Modified Date	
<a href="#">Proc A: Independence of Risk Personnel</a>	Pending	893	No resources assigned	Jack Auditor	2008-06-12 10:11:AM	
Model Specific Validation Actions	Pending	913	No resources assigned		2008-06-06 12:23:PM	
<a href="#">(*) Validation Independence</a>	In Progress	914	Jack Auditor	Jack Auditor	2008-06-06 02:56:PM	
Proc B: Key Documentation Check	Pending	894	No resources assigned	Jack Auditor	2008-06-06 12:20:PM	
<a href="#">(*) Key Document Check</a>	Pending	919	No resources assigned	Jack Auditor	2008-06-06 02:56:PM	
Proc C: Validation of Foundational Concepts	Pending	895	No resources assigned		2008-06-06 10:24:AM	
<a href="#">Proc C1: Portfolio Segmentation</a>	Pending	896	No resources assigned		2008-06-06 10:24:AM	
Proc C2: Composition of Output Scale	Pending	897	No resources assigned	Jack Auditor	2008-06-06 12:20:PM	
<a href="#">(*) Composition of Output Scale</a>	Pending	920	No resources assigned	Jack Auditor	2008-06-06 02:56:PM	
<a href="#">Proc C3: Assessment Methodology</a>	Pending	898	No resources assigned		2008-06-06 10:24:AM	
Proc D: Validation of Quantification Process	Pending	899	No resources assigned		2008-06-06 10:24:AM	
<a href="#">Proc D1: Data Availability and Issues</a>	Pending	900	No resources assigned		2008-06-06 10:24:AM	
<a href="#">Proc D2: Model Build</a>	Pending	901	No resources assigned		2008-06-06 10:24:AM	
<a href="#">Proc D3: Test of Model Performance Accuracy</a>	Pending	902	No resources assigned		2008-06-06 10:24:AM	
<a href="#">Proc D4: Analysis of Model Data Assumptions</a>	Pending	903	No resources assigned		2008-06-06 10:24:AM	
<a href="#">Proc E: Review of Ongoing Monitoring of System</a>	Pending	904	No resources assigned		2008-06-06 10:24:AM	
Proc F: Analysis of Model Output	Pending	905	No resources assigned		2008-06-06 10:24:AM	
<a href="#">Proc F1: Evaluation of Model Review Process</a>	Pending	906	No resources assigned		2008-06-06 10:24:AM	
<a href="#">Proc F2: Tests for Model Performance Accuracy</a>	Pending	907	No resources assigned		2008-06-06 10:24:AM	
<a href="#">Proc F3: Stress Testing</a>	Pending	908	No resources assigned	Jack Auditor	2008-06-12 10:18:AM	
<a href="#">Proc F4: Backtesting</a>	Pending	909	No resources assigned		2008-06-06 10:24:AM	
<a href="#">Proc F5: Benchmarking</a>	Pending	910	No resources assigned		2008-06-06 10:24:AM	
<a href="#">Proc G: Validation of Changes to Model</a>	Pending	911	No resources assigned		2008-06-06 10:24:AM	
<a href="#">Proc H: Key Documentation Elements</a>	Pending	912	No resources assigned		2008-06-06 10:24:AM	

# Multi-Lingual Support

BPS Model Validation includes full multilingual support, including support for double-bit characters such as simplified and traditional Chinese, Korean Hangul and Japanese Kanji.

[首页](#)  

**BPS GRC Enterprise Suite**  
[Home](#) [搜索](#) [报告](#) [问题](#) [风险管理图书馆](#) [管理](#)

**审计**

- [审计问题](#)
- [审计空间](#)
- [过时审计问题](#)

**项目**

- [时间表报告](#)
- [项目状态报告](#)

**我的收件箱 (3 instances found)**

Displaying 1 - 3 of 3 instances 过滤: All workflows | 进行中 | 高级

项	名称	评论	Received	Next Step
<a href="#">GST TAX RETURN DUE AT DEATH BUT NOT FILED</a>	<a href="#">Request Loss Event Approval</a>	Please approve	7/21/08	Approve
<a href="#">GST TAX RETURN DUE AT DEATH BUT NOT FILED</a>	<a href="#">Loss Event Contribution</a>	Please update Impacts	7/21/08	Accept or Reject
<a href="#">Copy of Quarterly SOX 404 Certification for Wealth Management Division</a>	<a href="#">Sign Off Certification</a>	done	2/27/08	

**我的任务 (One task found)**

Profile	名称	描述	Start	End	Status	项目
Task	<a href="#">(3) Track Completion of RCSA</a>		7/21/08	7/22/08	In Progress	<a href="#">RCSA 1 - Project</a>

**My Projects (10 projects found, displaying all projects)**

Profile	名称	描述	Start	End	项目经理	状态
Audit Project	<a href="#">RMSAP 1 - 2009</a>	Details on executing annual RMSAP Process. This template can be applied to any business unit.	7/1/08	12/31/08	Phil Obendorf	In Progress